



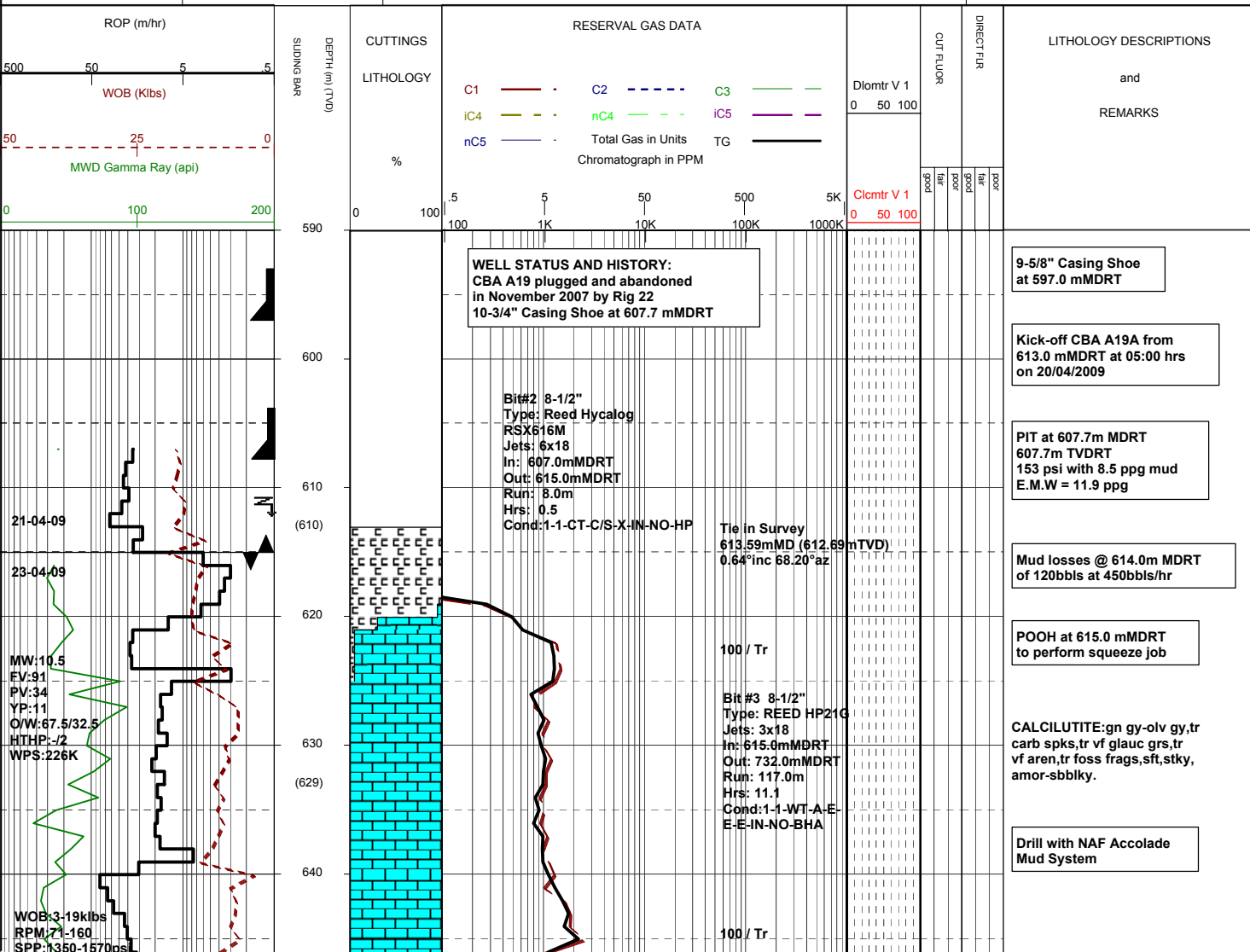
MASTERLOG

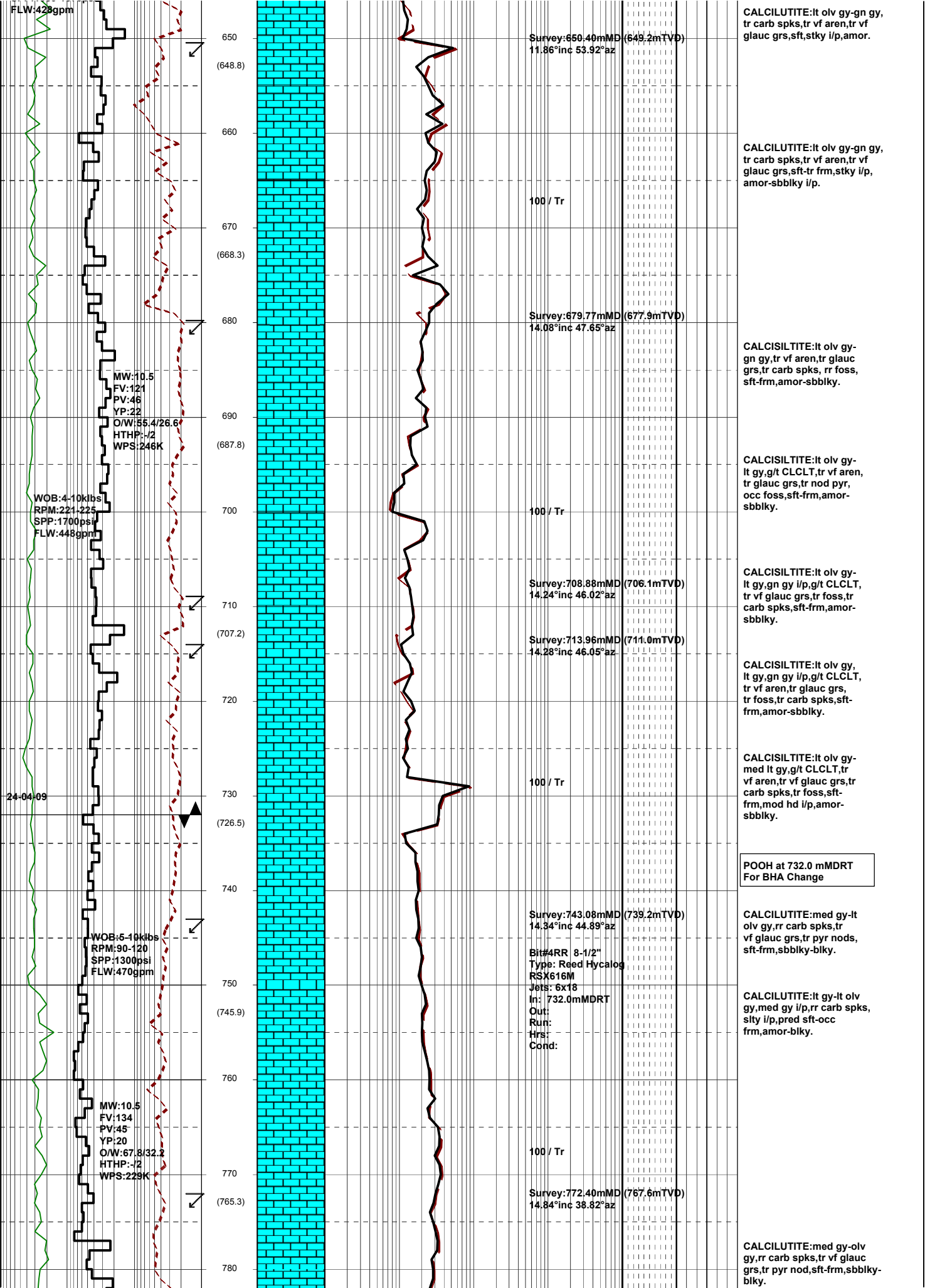
Cobia A19A



GENERAL	SURFACE POSITION	HOLE / CASING INFO	DATE / DEPTH	ENGINEERS
Country : AUSTRALIA	Longitude : 148°18'32.830" E	8-1/2" Hole to	Kick off Date: 20/04/2009	Mark Smith
Permit : VIC / L5	Latitude : 38°26'57.578" S	9-5/8" Casing to 597.0 mMDRT		Gareth Munro
Field : COBIA	MGA Co-ord X : 614234.63 mE	10-3/4" Surface Csg at 607.7 mMDRT		Colin Chadwick
Basin : GIPPSLAND	MGA Co-ord Y : 5743517.69 mN			Phil Rady
Well Type : DEVELOPMENT	RT to MSL : 41.0 m		Log Scale : 1/ 500	Robert Sulivan
Rig Name : Nabors 175	RT to Sea Bed : 120.0 m			Leigh Dower

ABBREVIATIONS		LITHOLOGY LEGEND				ENGINEERING LEGEND	
MW Mud Weight	WOB Weight on Bit (Klbs)	Claystone	Marl	Bryozoa	Glauconite	Casing shoe	RFT
FV Funnel Viscosity	RPM Rotations Per Min	Siltstone	Limestone	Radiolariae	Pyrite	Casing Top	MDT
PV Plastic Viscosity	FLW Flow Rate (gpm)	Fine sandstone	Dolomite	Echinoids		Survey	Mud gain
YP Yield Point	SPP Pump Pressure (psi)	Shale	Coal-lignite	Foraminiferae		Sidewall core	Mud loss
O/W Oil/Water Ratio	RR Re-Run Bit	Conglomerate	Volcanic cinder, tuf	Cement		Core	
WPS Aq. Phase Salinity	TG Trip Gas						
HPHT Fluid Loss	CG Connection Gas						
CI Chlorides	BG Background Gas						
Incl Inclination	DGP Drilled Gas Peak						
Az Azimuth	MM Mud Motor						





FLW:429gpm

650
(648.8)
660
(668.3)
670
(687.8)
680
(687.8)
690
(687.8)
700
(707.2)
710
(707.2)
720
(726.5)
730
(726.5)
740
(745.9)
750
(745.9)
760
(765.3)
770
(765.3)
780

MW:10.5
FV:121
PV:46
YP:22
O/W:55.4/26.6
HTHP:-12
WPS:246K

WOB:4-10klbs
RPM:221-225
SPP:1700psi
FLW:448gpm

24-04-09

WOB:5-8klbs
RPM:90-120
SPP:1300psi
FLW:470gpm

MW:10.5
FV:134
PV:45
YP:20
O/W:67.8/32.2
HTHP:-12
WPS:229K

Survey:650.40mMD (649.2mTVD)
11.86°inc 53.92°az

Survey:679.77mMD (677.9mTVD)
14.08°inc 47.65°az

Survey:708.88mMD (706.1mTVD)
14.24°inc 46.02°az

Survey:713.96mMD (711.0mTVD)
14.28°inc 46.05°az

Survey:743.08mMD (739.2mTVD)
14.34°inc 44.89°az

Bit#4RR 8-1/2"
Type: Reed Hycalog
RSX616M
Jets: 6x18
In: 732.0mMDRT
Out:
Run:
Hrs:
Cond:

Survey:772.40mMD (767.6mTVD)
14.84°inc 38.82°az

100 / Tr

100 / Tr

100 / Tr

100 / Tr

CALCILUTITE:lt olv gy-gn gy,
tr carb spks,tr vf aren,tr vf
glauc grs,sft,stky i/p,amor.

CALCILUTITE:lt olv gy-gn gy,
tr carb spks,tr vf aren,tr vf
glauc grs,sft-tr frm,stky i/p,
amor-sbbiky i/p.

CALCISILTITE:lt olv gy-
gn gy,tr vf aren,tr glauc
grs,tr carb spks, rr foss,
sft-frm,amor-sbbiky.

CALCISILTITE:lt olv gy-
lt gy,g/t CLCLT,tr vf aren,
tr glauc grs,tr nod pyr,
occ foss,sft-frm,amor-
sbbiky.

CALCISILTITE:lt olv gy-
lt gy,gn gy i/p,g/t CLCLT,
tr vf glauc grs,tr foss,tr
carb spks,sft-frm,amor-
sbbiky.

CALCISILTITE:lt olv gy,
lt gy,gn gy i/p,g/t CLCLT,
tr vf aren,tr glauc grs,
tr foss,tr carb spks,sft-
frm,amor-sbbiky.

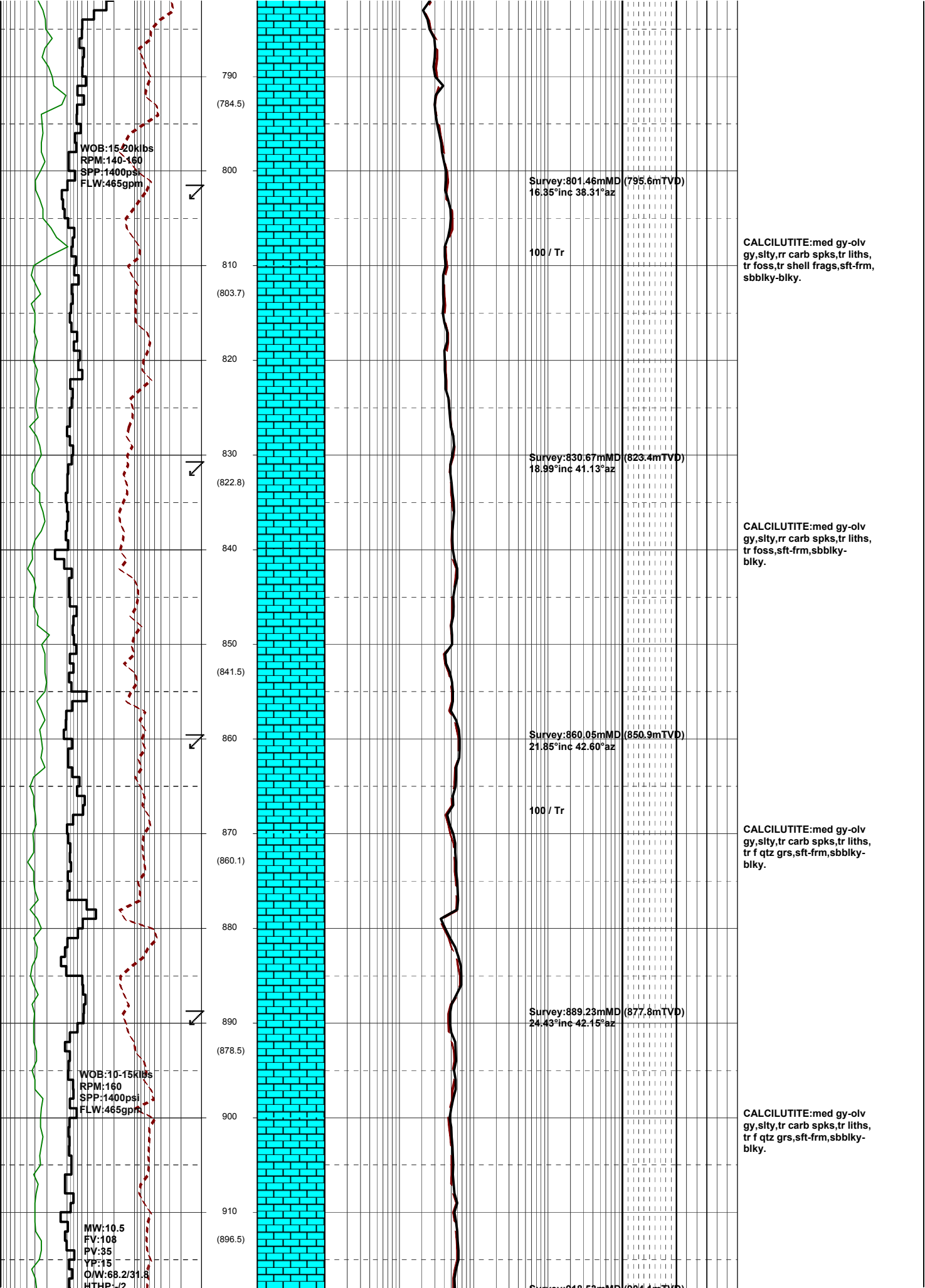
CALCISILTITE:lt olv gy-
med lt gy,g/t CLCLT,tr
vf aren,tr vf glauc grs,tr
carb spks,tr foss,sft-
frm,mod hd i/p,amor-
sbbiky.

POOH at 732.0 mMDRT
For BHA Change

CALCILUTITE:med gy-lt
olv gy,rr carb spks,tr
vf glauc grs,tr pyr nod,
sft-frm,sbbiky-blky.

CALCILUTITE:lt gy-lt olv
gy,med gy i/p,rr carb spks,
sity i/p,pred sft-occ
frm,amor-blky.

CALCILUTITE:med gy-olv
gy,rr carb spks,tr vf glauc
grs,tr pyr nod,sft-frm,sbbiky-
blky.



WOB:15.20klbs
 RPM:140-160
 SPP:1400psi
 FLW:465gpm

Survey:801.46mMD (795.6mTVD)
 16.35°inc 38.31°az

100 / Tr

CALCILUTITE:med gy-olv
 gy,slty,rr carb spks,tr liths,
 tr foss,tr shell frags,sft-frn,
 sbbiky-blky.

Survey:830.67mMD (823.4mTVD)
 18.99°inc 41.13°az

CALCILUTITE:med gy-olv
 gy,slty,rr carb spks,tr liths,
 tr foss,sft-frn,sbbiky-
 blky.

Survey:860.05mMD (850.9mTVD)
 21.85°inc 42.60°az

100 / Tr

CALCILUTITE:med gy-olv
 gy,slty,tr carb spks,tr liths,
 tr f qtz grs,sft-frn,sbbiky-
 blky.

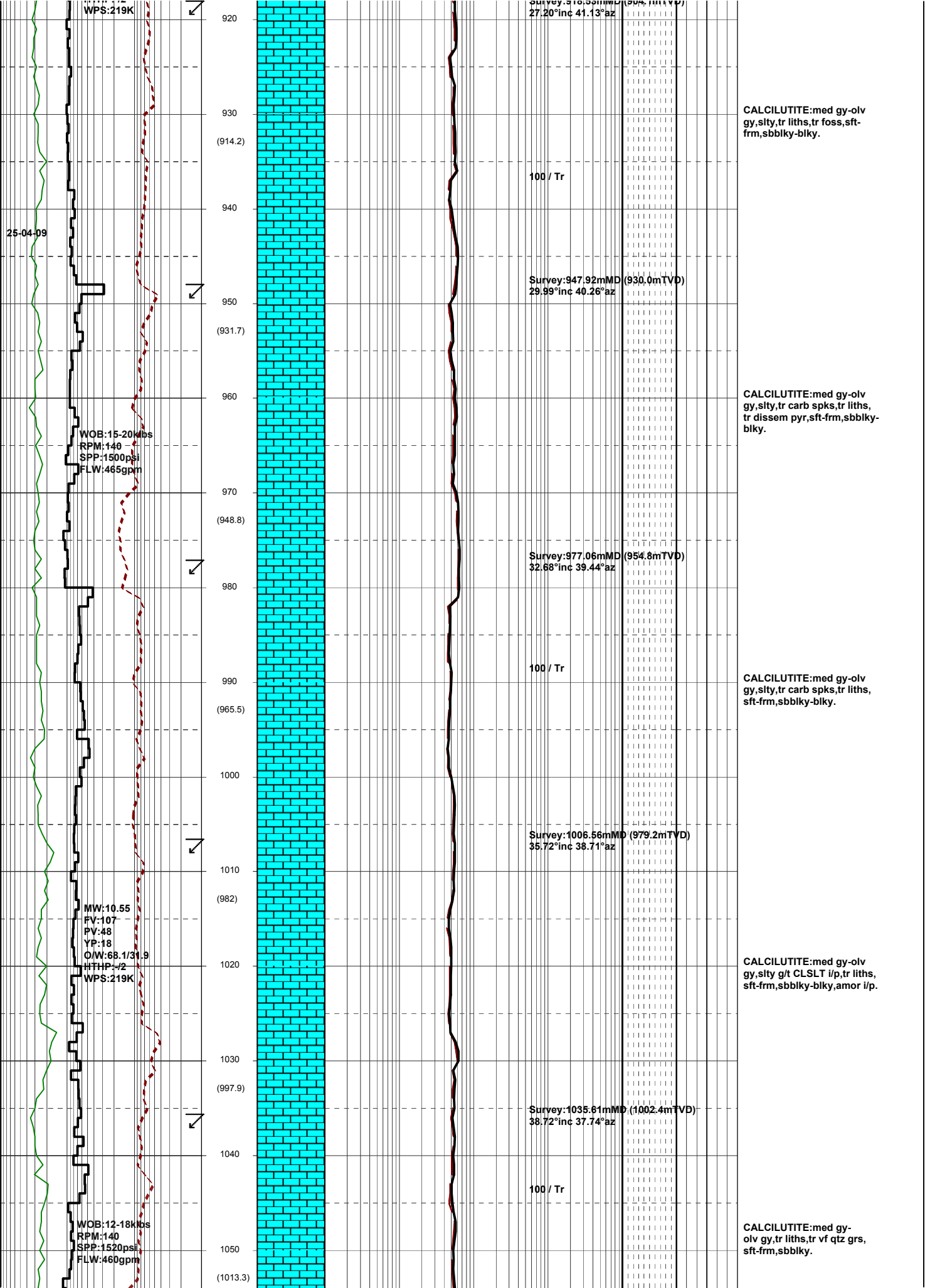
Survey:889.23mMD (877.8mTVD)
 24.43°inc 42.15°az

CALCILUTITE:med gy-olv
 gy,slty,tr carb spks,tr liths,
 tr f qtz grs,sft-frn,sbbiky-
 blky.

WOB:10-15klbs
 RPM:160
 SPP:1400psi
 FLW:465gpm

MW:10.5
 FV:108
 PV:35
 YP:15
 O/W:68.2/31.8
 HTHP:1/2

Survey:919.53mMD (904.1mTVD)
 26.15°inc 42.15°az



CALCILUTITE: med gy-olv
gy, slty, tr liths, tr foss, sft-
frm, sbbiky-blky.

100 / Tr

Survey: 947.92mMD (930.0mTVD)
29.99°inc 40.26°az

CALCILUTITE: med gy-olv
gy, slty, tr carb spks, tr liths,
tr disse pyr, sft-frm, sbbiky-
blky.

Survey: 977.06mMD (954.8mTVD)
32.68°inc 39.44°az

100 / Tr

CALCILUTITE: med gy-olv
gy, slty, tr carb spks, tr liths,
sft-frm, sbbiky-blky.

Survey: 1006.56mMD (979.2mTVD)
35.72°inc 38.71°az

CALCILUTITE: med gy-olv
gy, slty g/t CLSLT i/p, tr liths,
sft-frm, sbbiky-blky, amor i/p.

Survey: 1035.61mMD (1002.4mTVD)
38.72°inc 37.74°az

100 / Tr

CALCILUTITE: med gy-
olv gy, tr liths, tr vf qtz grs,
sft-frm, sbbiky.

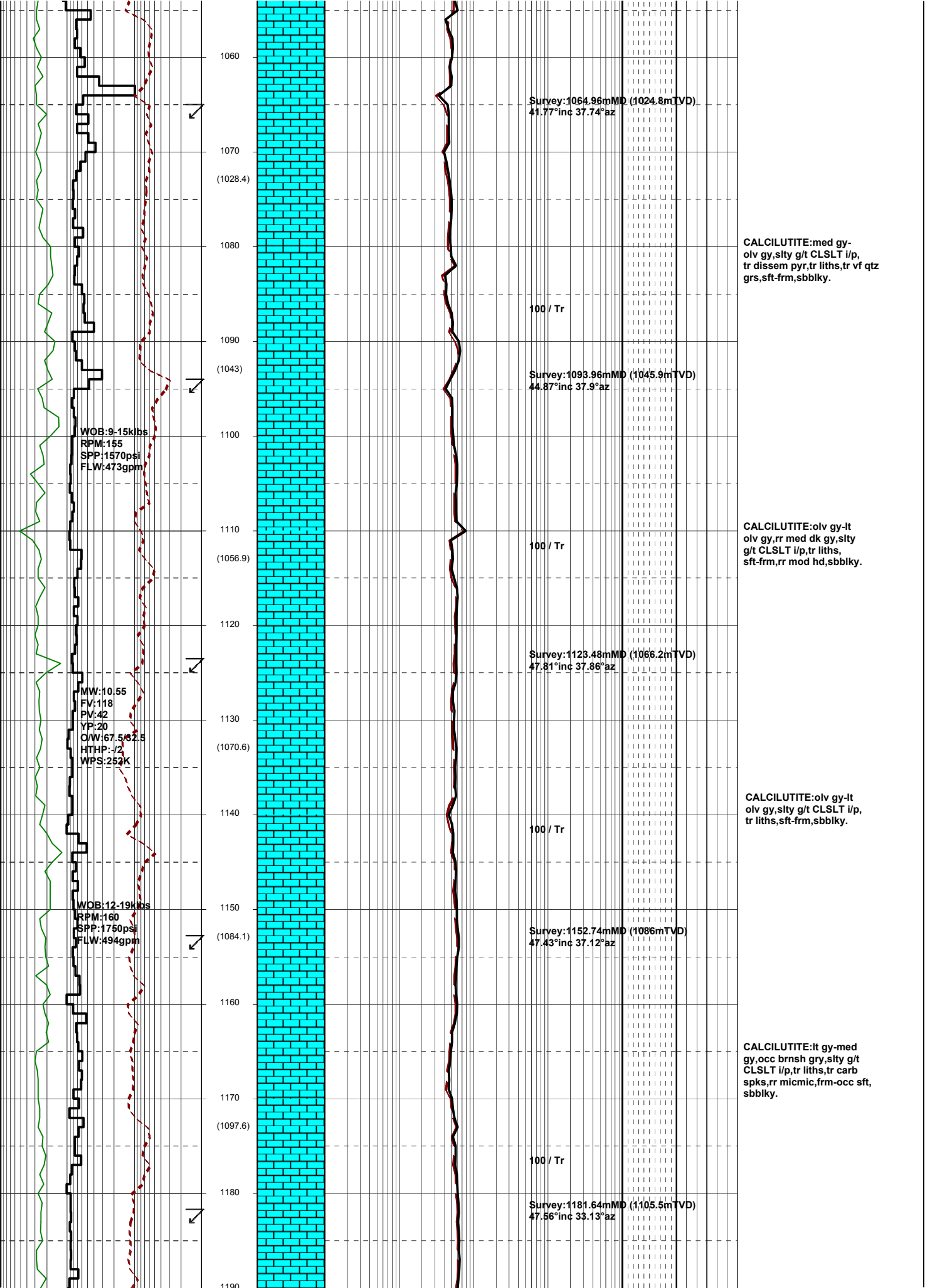
25-04-09

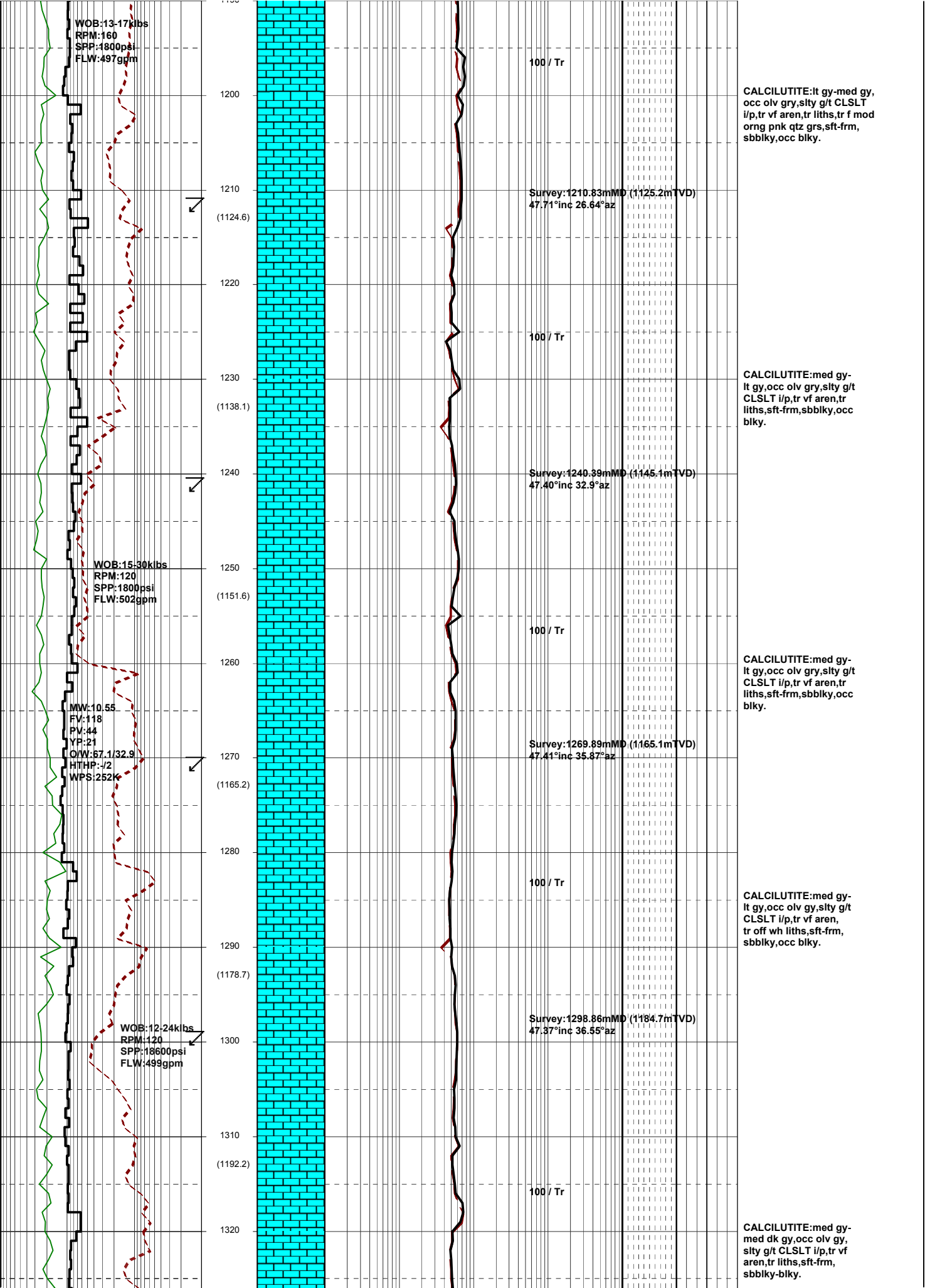
WPS: 219K

WOB: 15-20k lbs
RPM: 140
SPP: 1500 psi
FLW: 465 gpm

MW: 10.55
FV: 107
PV: 48
YP: 18
O/W: 68.1/31.9
HTHP: /2
WPS: 219K

WOB: 12-18k lbs
RPM: 140
SPP: 1520 psi
FLW: 460 gpm





WOB:13-17kbs
RPM:160
SPP:1800psi
FLW:497gpm

100 / Tr

CALCILUTITE:It gy-med gy, occ olv gry, slty g/t CLSLT i/p, tr vf aren, tr liths, tr f mod orng pnk qtz grs, sft-frm, sbbiky, occ blkly.

Survey:1210.83mMD (1125.2mTVD)
47.71°inc 26.64°az

100 / Tr

CALCILUTITE:med gy-lt gy, occ olv gry, slty g/t CLSLT i/p, tr vf aren, tr liths, sft-frm, sbbiky, occ blkly.

Survey:1224.39mMD (1145.1mTVD)
47.40°inc 32.9°az

WOB:15-30kbs
RPM:120
SPP:1800psi
FLW:502gpm

100 / Tr

CALCILUTITE:med gy-lt gy, occ olv gry, slty g/t CLSLT i/p, tr vf aren, tr liths, sft-frm, sbbiky, occ blkly.

MW:10.55
FV:118
PV:44
YF:21
QW:67.1/32.9
HTHP:-J2
WPS:252

Survey:1269.89mMD (1165.1mTVD)
47.41°inc 35.87°az

100 / Tr

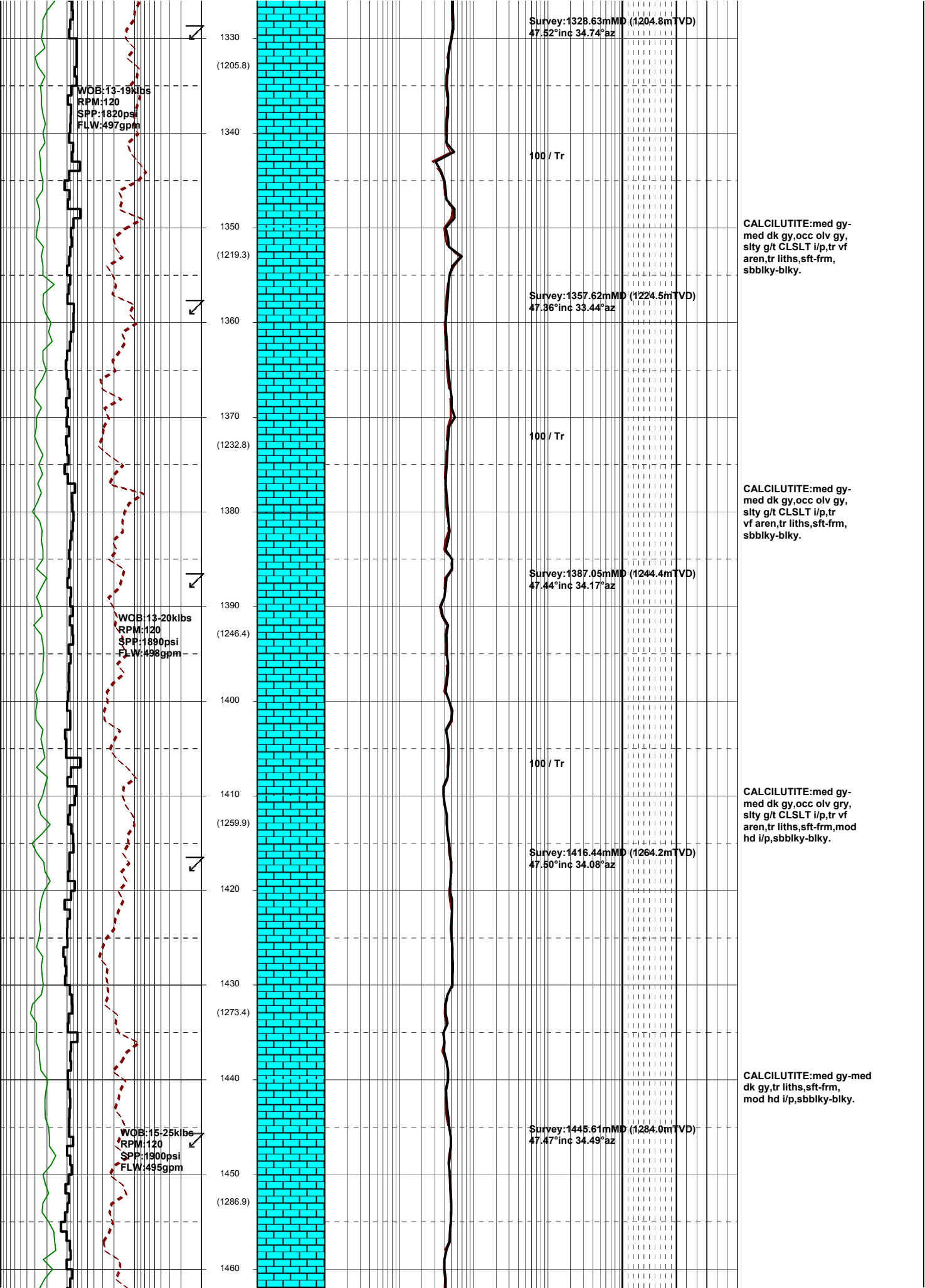
CALCILUTITE:med gy-lt gy, occ olv gry, slty g/t CLSLT i/p, tr vf aren, tr off wh liths, sft-frm, sbbiky, occ blkly.

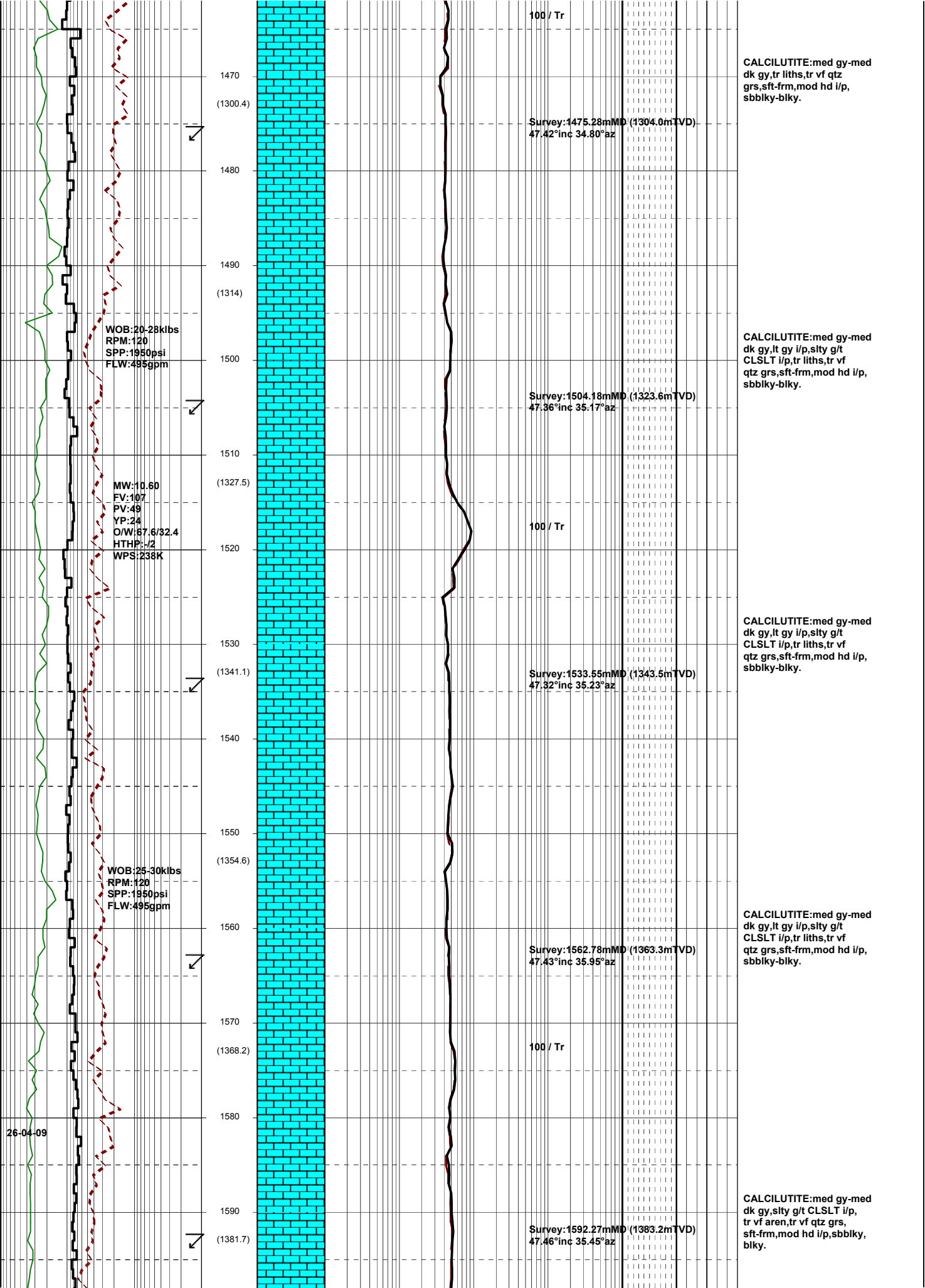
Survey:1298.86mMD (1184.7mTVD)
47.37°inc 36.55°az

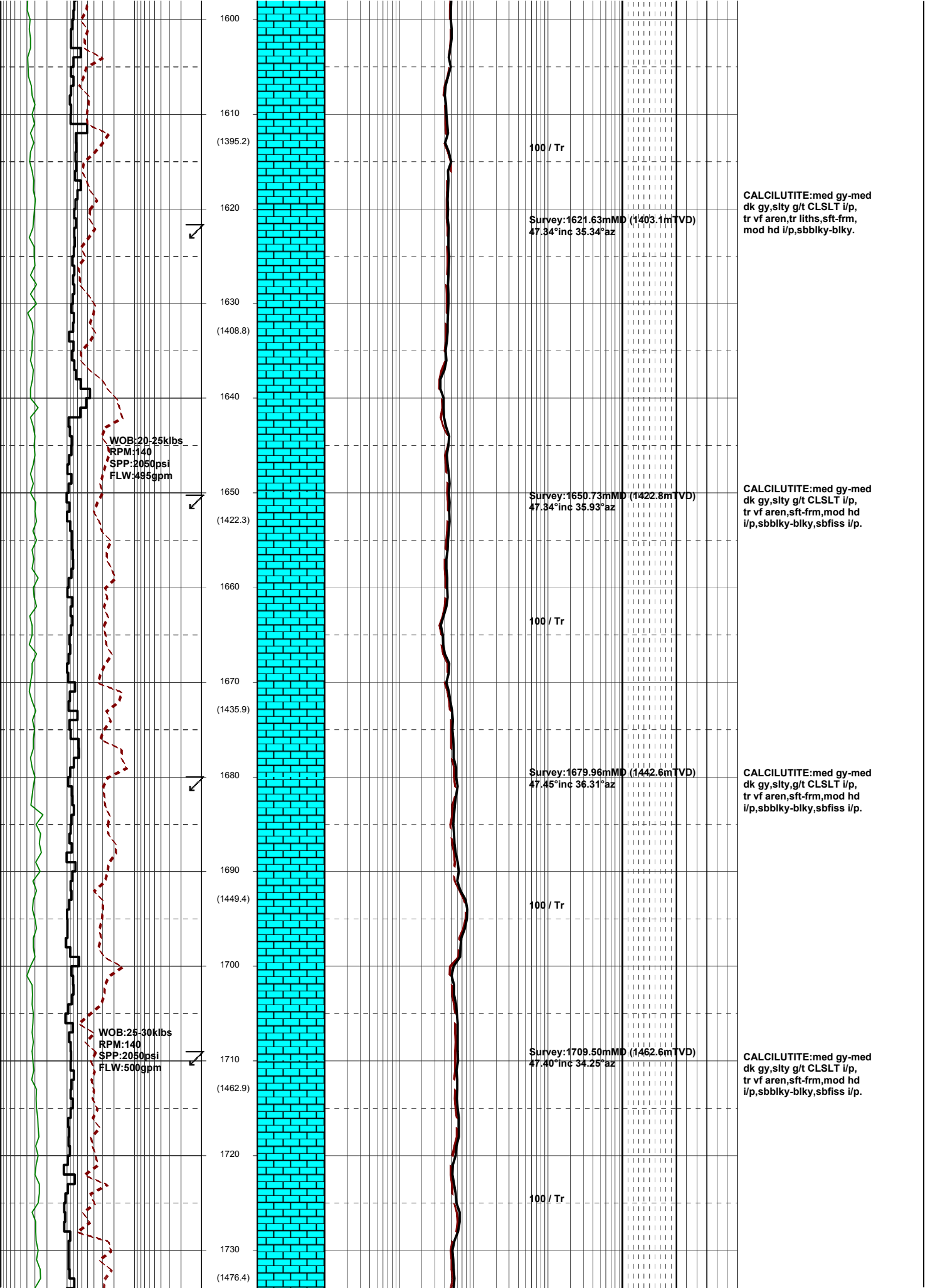
WOB:12-24kbs
RPM:120
SPP:18600psi
FLW:499gpm

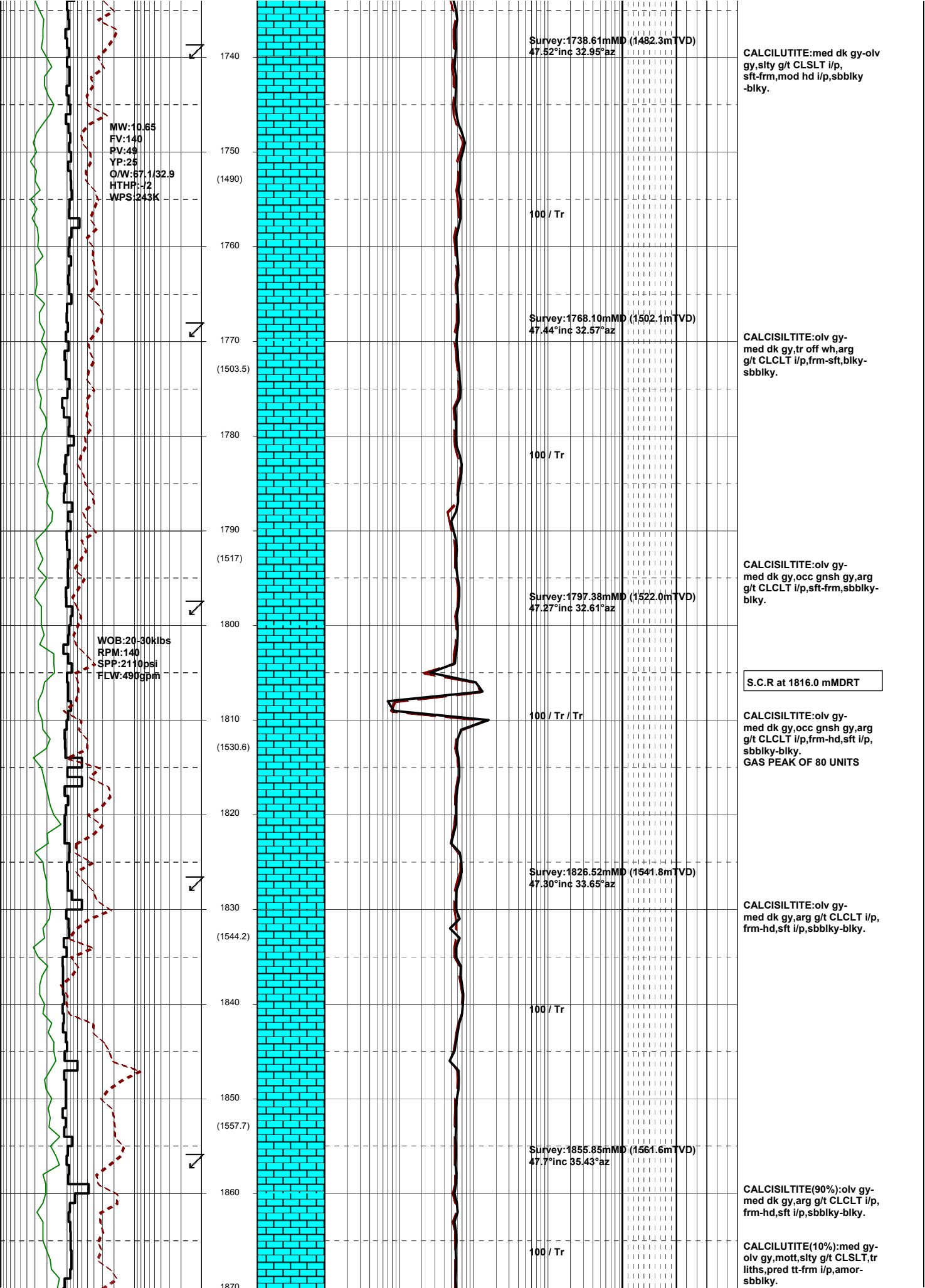
100 / Tr

CALCILUTITE:med gy-med dk gy, occ olv gry, slty g/t CLSLT i/p, tr vf aren, tr liths, sft-frm, sbbiky-blky.









MW: 10.65
 FV: 140
 PV: 49
 YP: 25
 O/W: 67.1/32.9
 HTHP: -72
 WPS: 243K

WOB: 20-30kibs
 RPM: 140
 SPP: 2110psi
 FLW: 490gpm

Survey: 1738.61mMD (1482.3mTVD)
 47.52°inc 32.95°az

CALCILUTITE: med dk gy-olv gy, slty g/t CLSLT i/p, sft frm, mod hd i/p, sbbiky-blky.

100 / Tr

Survey: 1768.10mMD (1502.1mTVD)
 47.44°inc 32.57°az

CALCISILTITE: olv gy-med dk gy, tr off wh, arg g/t CLCLT i/p, frm-sft, biky-sbbiky.

100 / Tr

Survey: 1797.38mMD (1522.0mTVD)
 47.27°inc 32.61°az

CALCISILTITE: olv gy-med dk gy, occ gnsh gy, arg g/t CLCLT i/p, sft frm, sbbiky-blky.

S.C.R at 1816.0 mMDRT

100 / Tr / Tr

CALCISILTITE: olv gy-med dk gy, occ gnsh gy, arg g/t CLCLT i/p, frm-hd, sft i/p, sbbiky-blky.
 GAS PEAK OF 80 UNITS

Survey: 1826.52mMD (1541.8mTVD)
 47.30°inc 33.65°az

CALCISILTITE: olv gy-med dk gy, arg g/t CLCLT i/p, frm-hd, sft i/p, sbbiky-blky.

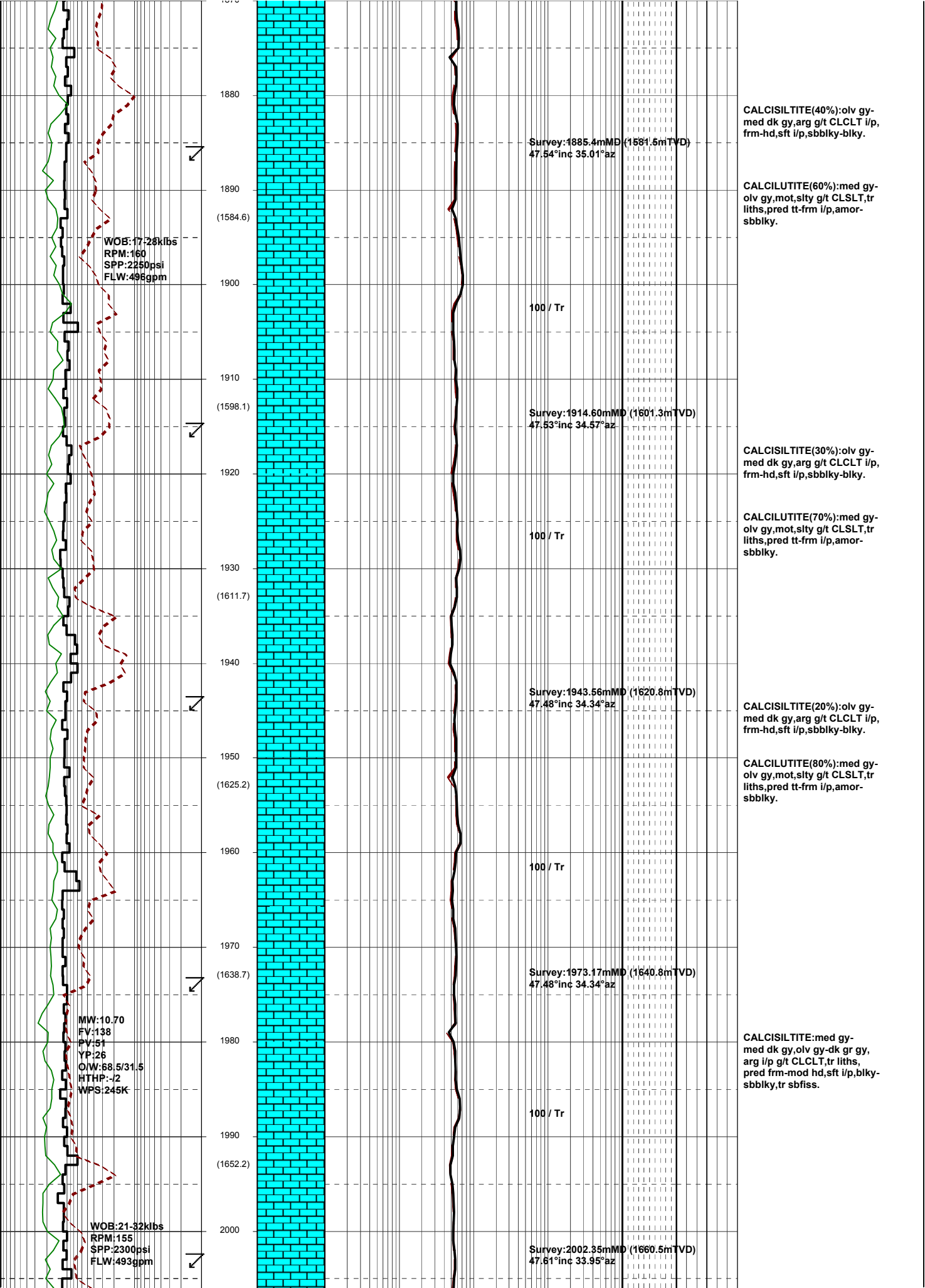
100 / Tr

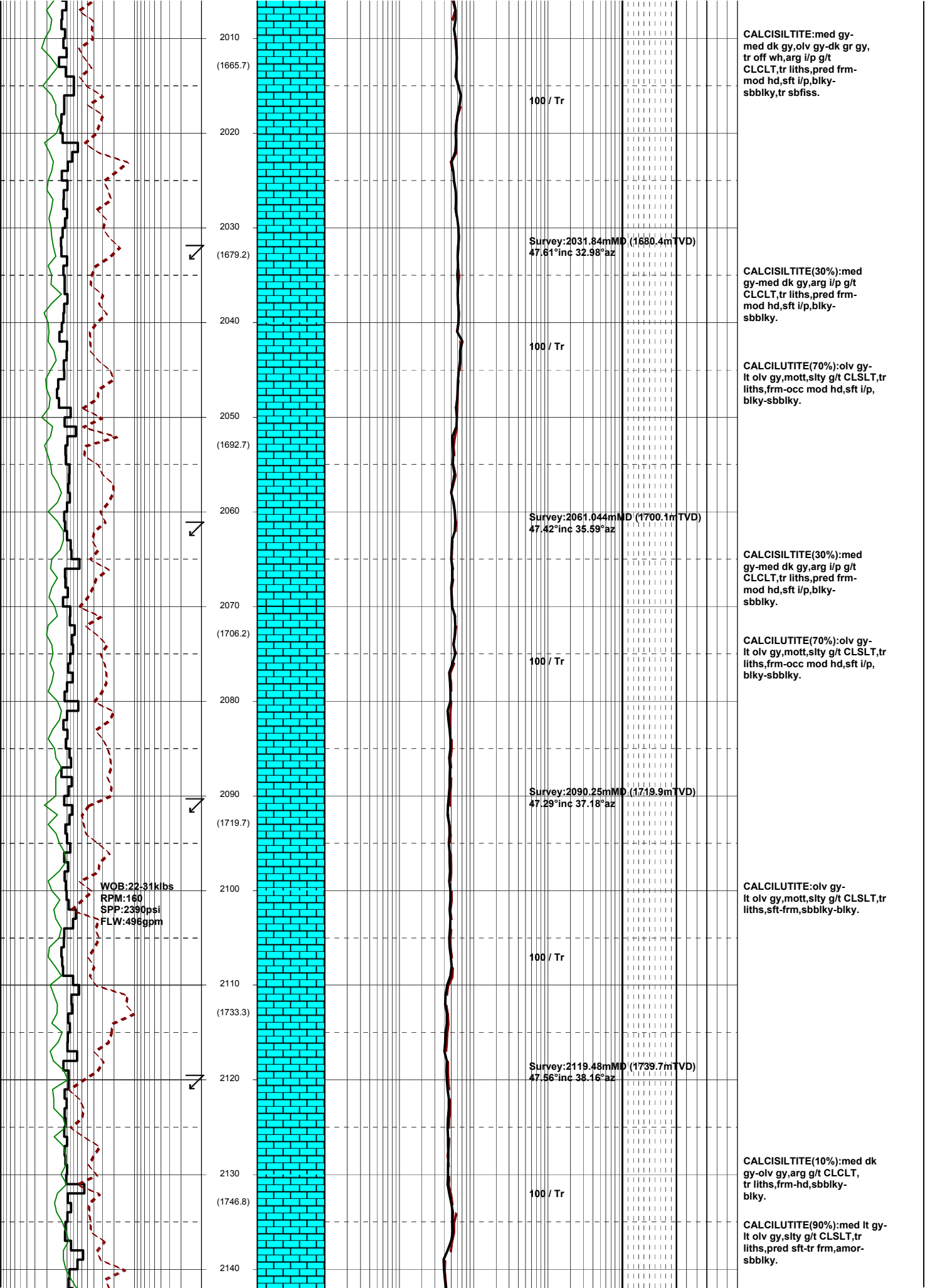
Survey: 1855.85mMD (1561.6mTVD)
 47.7°inc 35.43°az

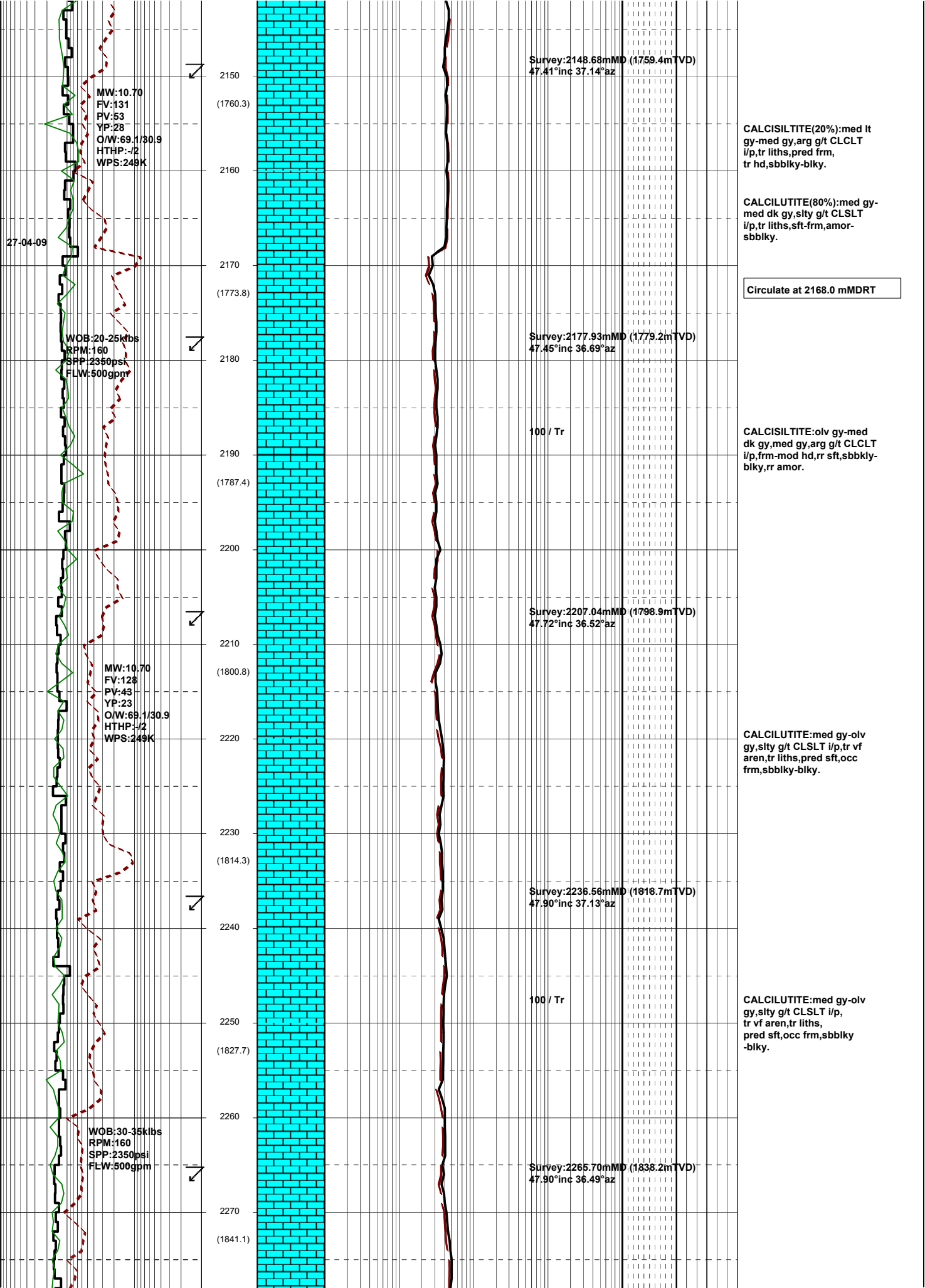
CALCISILTITE(90%): olv gy-med dk gy, arg g/t CLCLT i/p, frm-hd, sft i/p, sbbiky-blky.

100 / Tr

CALCILUTITE(10%): med gy-olv gy, mott, slty g/t CLSLT, tr liths, pred tt-frm i/p, amor-sbbiky.







MW:10.70
 FV:131
 PV:53
 YP:28
 O/W:69.1/30.9
 HTHP:-1/2
 WPS:249K

27-04-09

WOB:20-25klbs
 RPM:160
 SPP:2350psi
 FLW:500gpm

MW:10.70
 FV:128
 PV:43
 YP:23
 O/W:69.1/30.9
 HTHP:-1/2
 WPS:249K

WOB:30-35klbs
 RPM:160
 SPP:2350psi
 FLW:500gpm

Survey:2148.68mMD (1759.4mTVD)
 47.41°inc 37.14°az

CALCISILTITE(20%):med lt gy-med gy,arg g/t CLCLT i/p,tr liths,pred frm, tr hd,sbbkly-blky.

CALCILUTITE(80%):med gy-med dk gy,sity g/t CLSLT i/p,tr liths,sft-frm,amor-sbbkly.

Circulate at 2168.0 mMDRT

Survey:2177.93mMD (1779.2mTVD)
 47.45°inc 36.69°az

100 / Tr

CALCISILTITE:olv gy-med dk gy,med gy,arg g/t CLCLT i/p,frm-mod hd,rr sft,sbbkly-blky,rr amor.

Survey:2207.04mMD (1798.9mTVD)
 47.72°inc 36.52°az

CALCILUTITE:med gy-olv gy,sity g/t CLSLT i/p,tr vf aren,tr liths,pred sft,occ frm,sbbkly-blky.

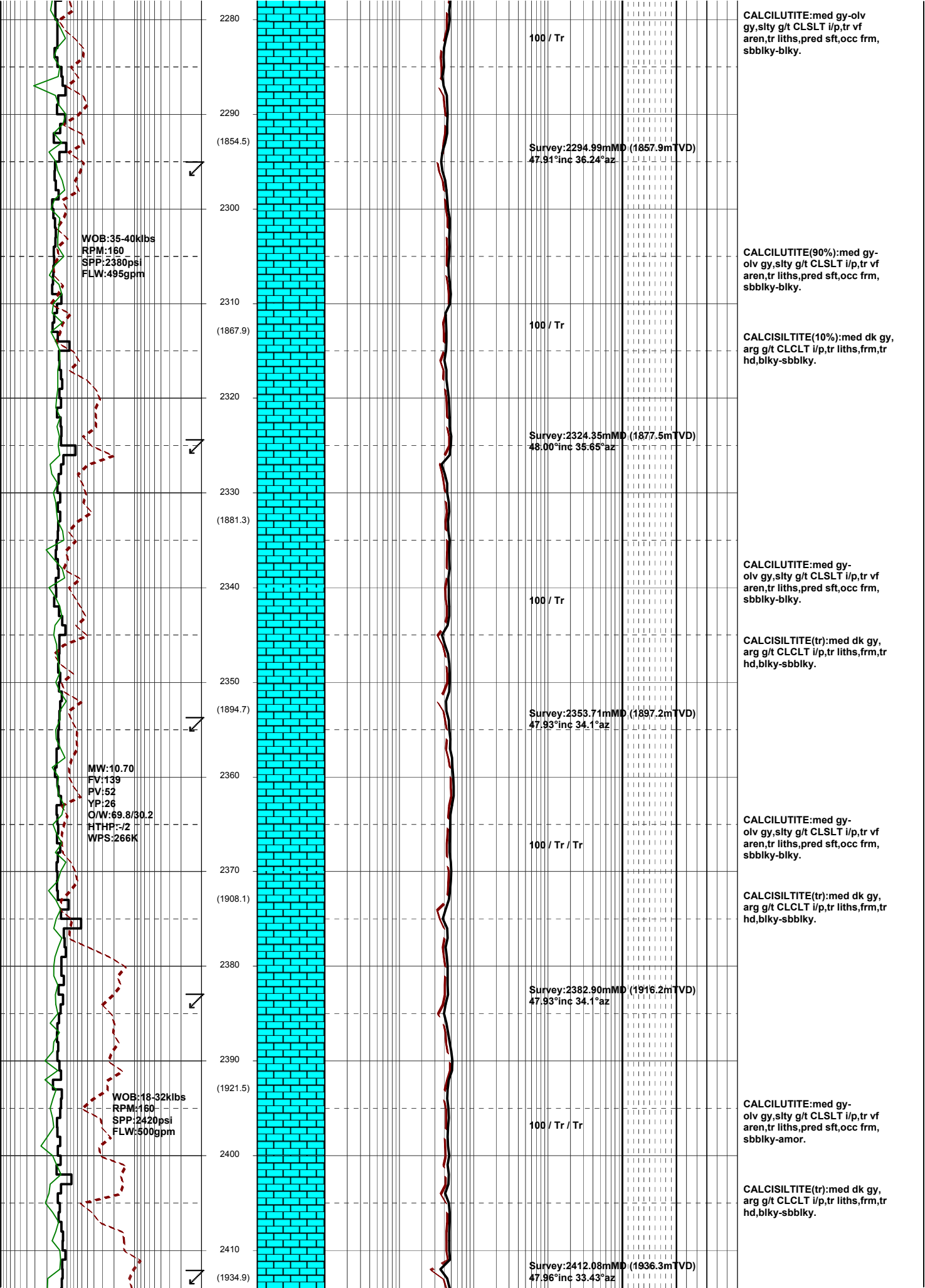
Survey:2236.56mMD (1818.7mTVD)
 47.90°inc 37.13°az

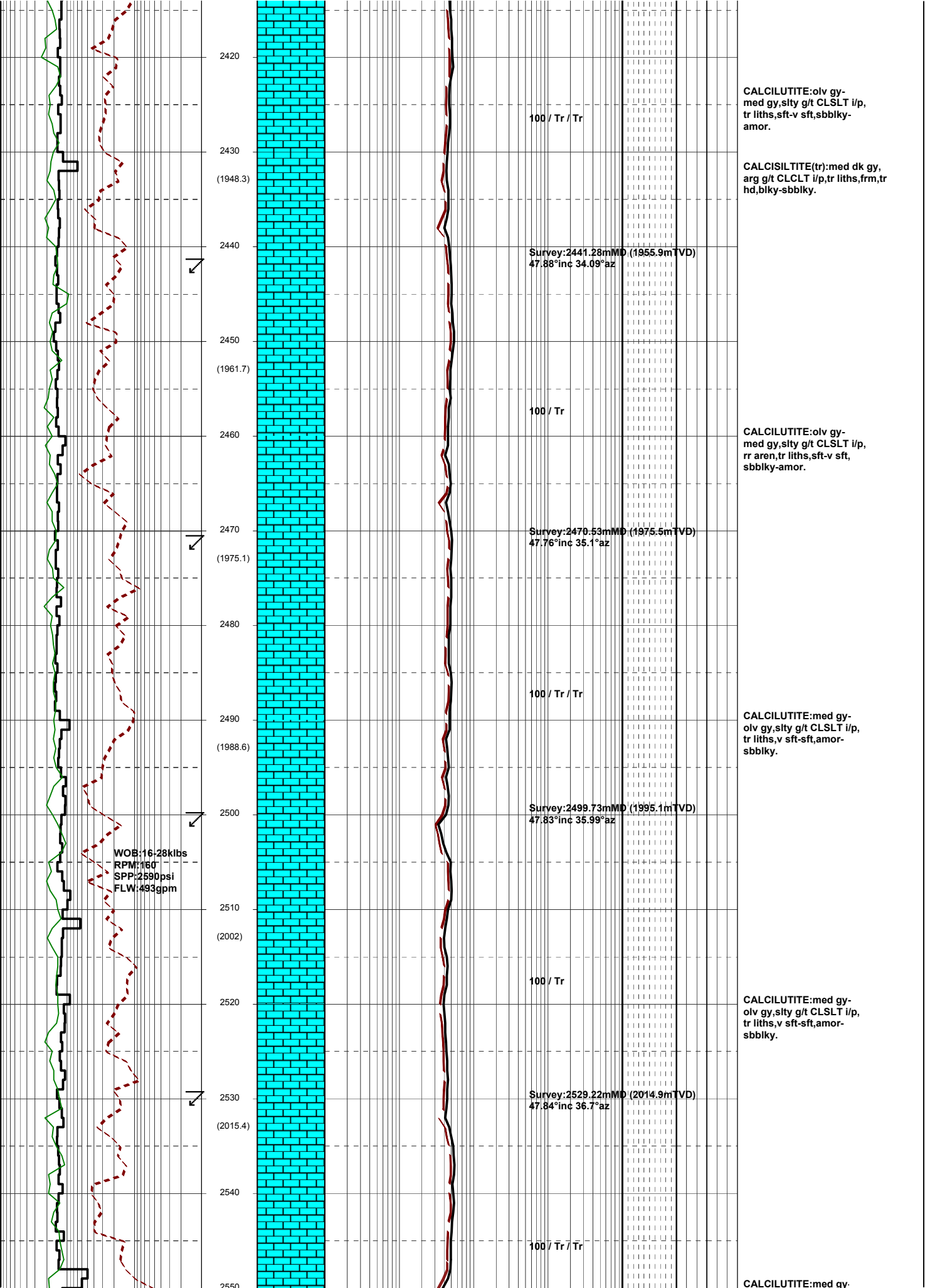
100 / Tr

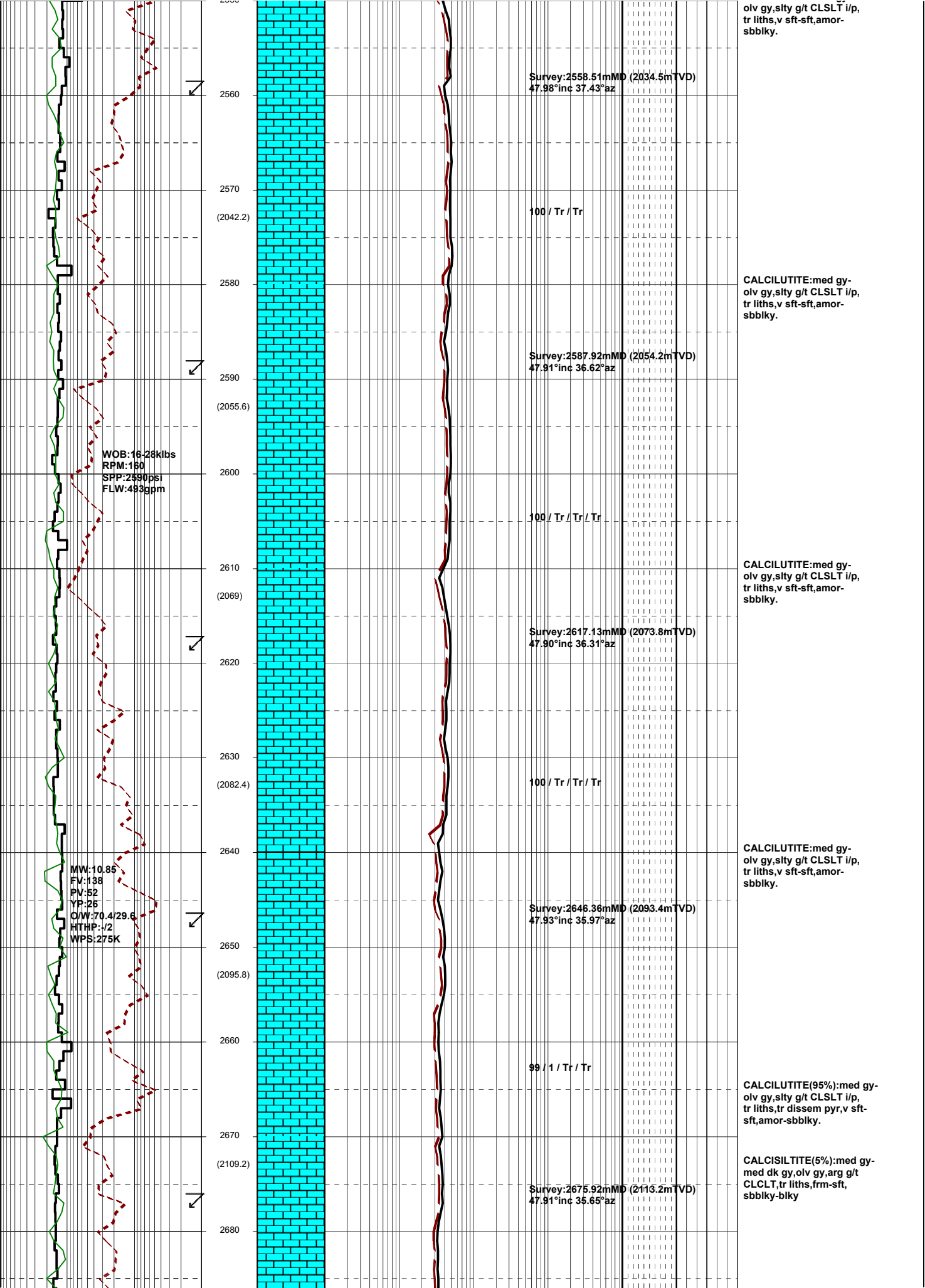
CALCILUTITE:med gy-olv gy,sity g/t CLSLT i/p, tr vf aren,tr liths, pred sft,occ frm,sbbkly-blky.

Survey:2265.70mMD (1838.2mTVD)
 47.90°inc 36.49°az

2150
(1760.3)
2160
2170
(1773.8)
2180
2190
(1787.4)
2200
2210
(1800.8)
2220
2230
(1814.3)
2240
2250
(1827.7)
2260
2270
(1841.1)



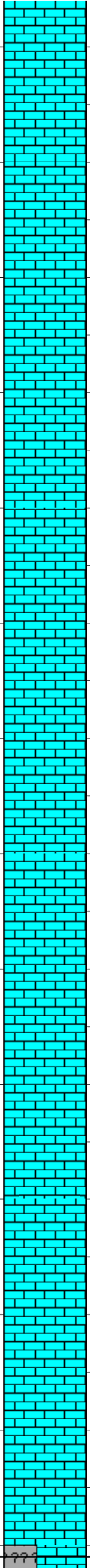




2690
(2122.7)
2700
2710
(2136.1)
2720
2730
(2149.6)
2740
2750
(2163)
2760
2770
(2176.5)
2780
2790
(2189.9)
2800
2810
(2203.5)
2820

WOB:12-25klbs
RPM:160
SPP:2600psi
FLW:493gpm

WOB:20-30klbs
RPM:160
SPP:2700psi
FLW:485gpm



99 / 1 / Tr / Tr

Survey:2705.30mMD (2132.9mTVD)
47.78°inc 35.94°az

99 / 1 / Tr / Tr

Survey:2734.50mMD (2152.6mTVD)
47.48°inc 41.19°az

99 / 1 / Tr / Tr

Survey:2763.81mMD (2172.3mTVD)
47.99°inc 44.70°az

99 / 1 / Tr / Tr

Survey:2793.20mMD (2192.0mTVD)
47.86°inc 45.79°az

99 / 1 / Tr / Tr

CALCILUTITE(95%):med gy-olv gy,sity g/t CLSLT i/p, tr liths,v sft-sft,amor-sbbkly.

CALCILUTITE(5%):med gy-med dk gy,olv gy,arg g/t CLCLT, tr liths,frm-sft, sbbkly-bkly

CALCILUTITE(95%):med gy-olv gy,sity g/t CLSLT i/p, tr liths,v sft-sft,amor-sbbkly.

CALCILUTITE(5%):med gy-med dk gy,olv gy,arg g/t CLCLT, tr liths,frm-sft, sbbkly-bkly

CALCILUTITE:med lt gy-med dk gy,lt olv gy,sity g/t CLSLT i/p, tr liths,sft, tr frm, amor-sbbkly.

CALCILUTITE:med lt gy-med gy,lt olv gy, sity g/t CLSLT i/p, tr liths,sft, tr frm, amor, tr sbbkly.

Lakes Entrance Fm:
2821.0mMDRT 2211.0mTVDRT
(-2170.0mTVDSS)

